

PHASE II ENHANCED VAPOR RECOVERY (EVR) AND ISD IMPROVEMENTS

ABOUT OUR FIRM:

Robertson Engineering, inc. has provided quality, reliable and cost effective planning, surveying, civil engineering, structural engineering, petroleum and construction support services throughout northern and central California communities for over 16 years. We pride ourselves on reasonable fees.

Typical Canister Installation



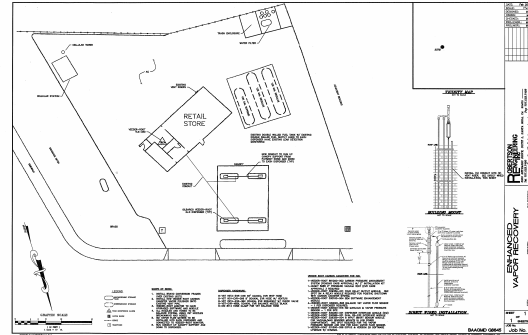
AGENCY PERMITS:

- "Authority to Construct" approval from the Air Quality District
 - Local agency plan approvals and permits
- Robertson Engineering, inc. has worked with over 30 northern and central California cities and counties to enable us to coordinate these approvals and permits efficiently.

Typical Horizontal Tank in Fire Enclosure



Sample Drawing



PLANS:

- The Air Quality Districts and local agencies require Site Plans showing the existing improvement, including buildings, fuel tanks, dispensers, vent risers.
- Owners can provide a scaled Site Plan or we can measure and draft a Site Plan.
- Plans include the site layout, a description of the work and details of the EVR system to be installed.

HEALY TANK OR CARBON CANISTER:

Robertson Engineering, inc. can provide plans and details of approved Healy tank or carbon canister, with or without a steel fire protective enclosure, if required by local Fire Agencies. We can provide Building Department structural calculations for the Healy tank and concrete pad in conformance with the new California Building Code. If you elect to install your In-Station Diagnostics (ISD) at this time, we can include that with your plans and permits.

CONTACT:

Mike Robertson,
Office: (707)523.7490
Cell: (707)953.5443
Email: mike@robertsonengineering.net

The deadline for
Phase II EVR compliance is
April 1, 2009